

# TECHNICAL SPECIFICATIONS

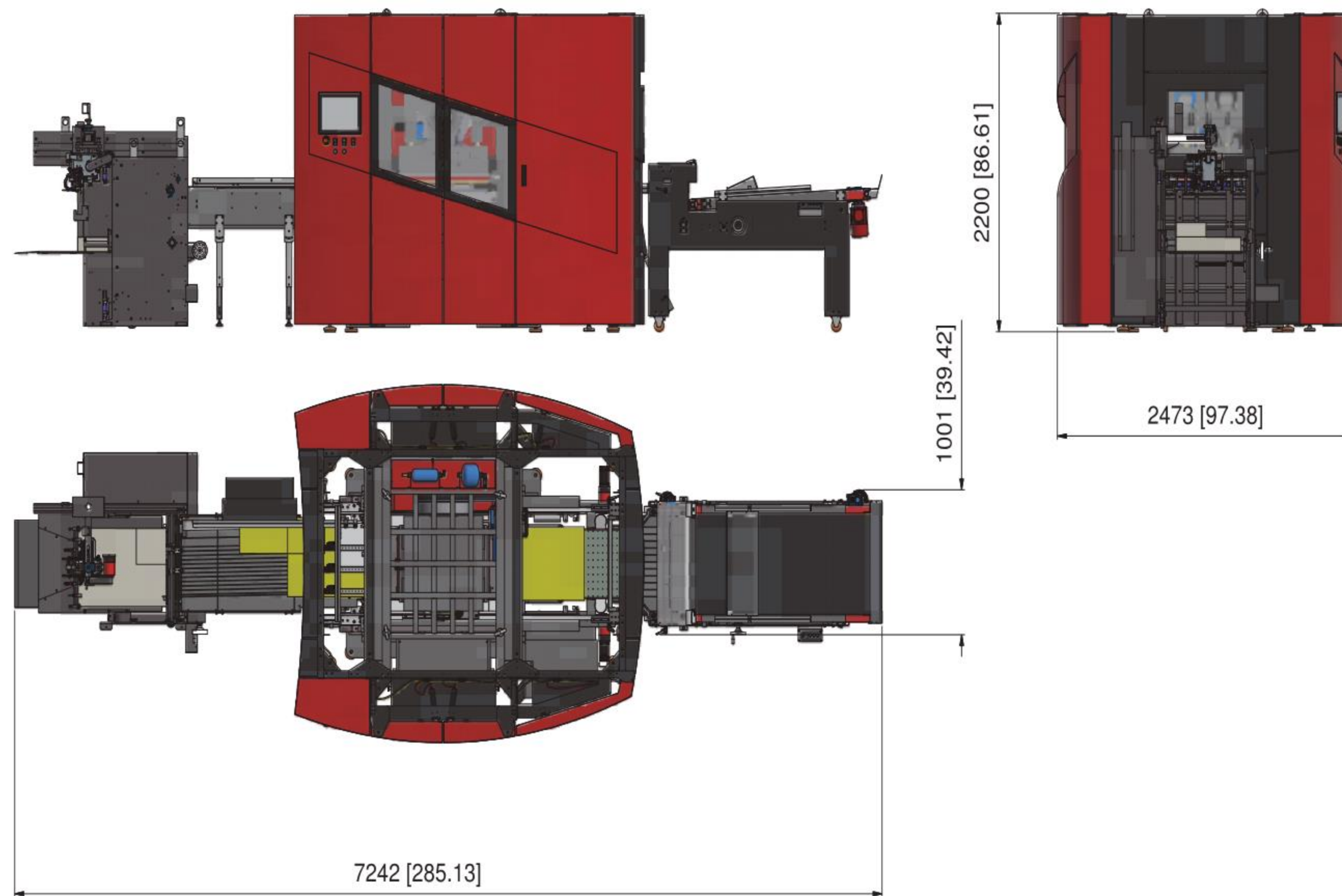
Max area which can be die cut	490 x 710mm
Waste min/max:	
Offcut edge in direction of travel	min 9mm
Offcut edge - lateral	min 9mm
Max sheet size	540 x 1020mm
Min sheet size (single stroke)	300 x 300mm
Min./Max. thickness of card/paper	from 150 g/m <sup>2</sup> to 2 mm
Thickness of corrugated card	up to 4 mm thick
Register setting	mechanical with electronic control
Power	12 kW
Cutting force: paper - card	2MN with 350 g/m <sup>2</sup>
Max working speed (depending on no. of sheets)	up to 1800 sheets/hour
Compressed air req'd (to be supplied by the client)	200 l/min at 6 bar
Electrical connection: (Neutral and earth must be separate. If this is not possible a transformer may be requested at additional cost)	3PH, 400 V + N + T, 50 Hz



I T A L I A N C U S T O M D E S I G N

## DCH 200

AUTOMATIC DIE CUTTER FOR PAPERBOARD



[www.scsautomaberg.com](http://www.scsautomaberg.com)



SCS Automaberg srl  
via Maestri del Lavoro, 33 - 24060 Brusaporto (BG) - ITALY  
tel. +39 035 682480 - fax +39 035 686029

SCS-DCH200-IT Rev.1020







• HIGH PILE FEEDER  
(Height of pile 1 m. including pallet height)

The DCH200 features a **HIGH PILE FEEDER** which will handle a wide variety of stock weights and thicknesses.

The feeders fully automatic innovative alignment system allows any type of material to be perfectly registered, with minimum operator input.

Another feature is the **STEP & REPEAT** mode. This function allows the option of smaller less expensive dies. This concept significantly reduces make ready times. The mode is the perfect solution for short run jobs where the cost of a multi up die could be prohibitive and is the ideal for one off work where a die will not be used again.

The blanks remain within the sheet for the pass through the machine. No holding points are required, and therefore the blanks are completely free of nicks. The DCH200 automatically delivers the blanks completely stripped with the waste removed. The touch screen control panel makes die and cut positioning simple and fast. All settings can be saved and later accessed as and when required for repeat jobs. This attribute drastically reduces make ready times. The mechanical settings are confined to die and base plate changing which is simple and user friendly and can usually be carried out in 2 to 3 minutes.

The **DCH200** can be remotely monitored within the company network via an Ethernet connection.

The many unique characteristics of the DCH200 make the equipment particularly suitable for printers and for small to medium enterprises who are aiming to replace outdated automated traditional flatbed or cylinder equipment.

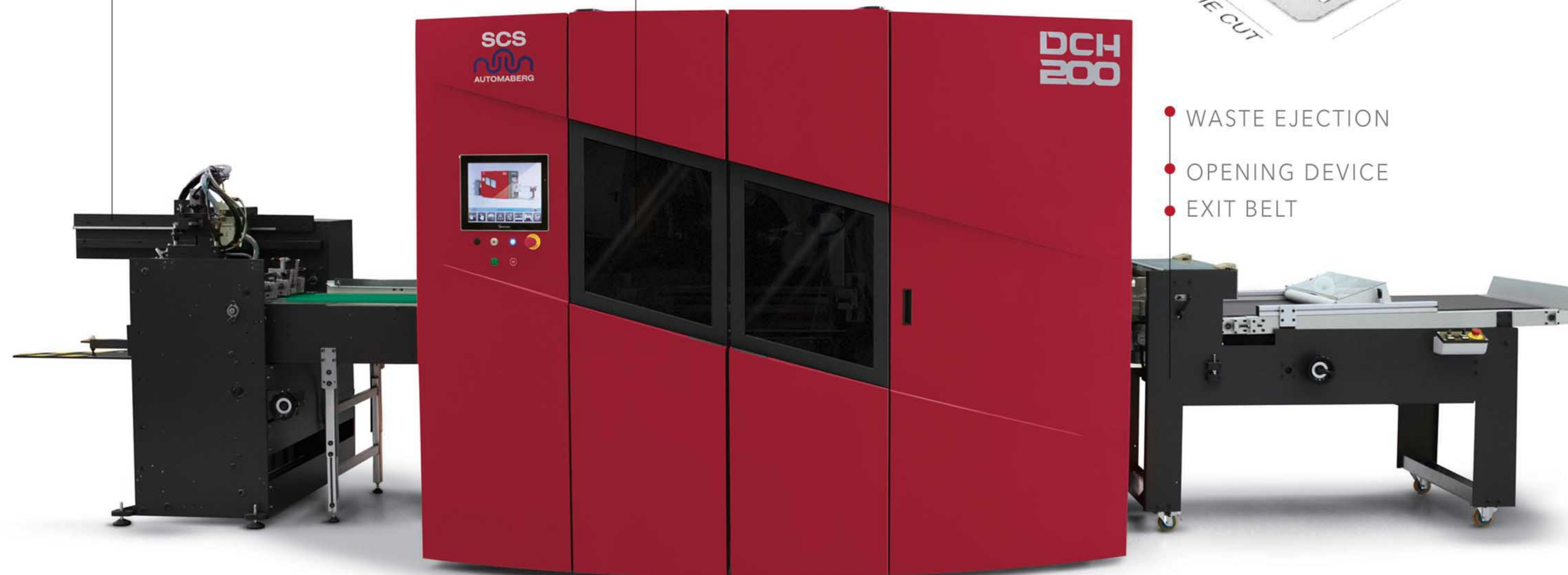
The DCH 200 automated features makes the machine the perfect choice for companies wishing to enter the die cutting market. The fast uncomplicated make ready and ease of operation makes the DCH 200 particularly suitable for short or medium runs.

**MATERIALS THAT CAN BE PROCESSED:**

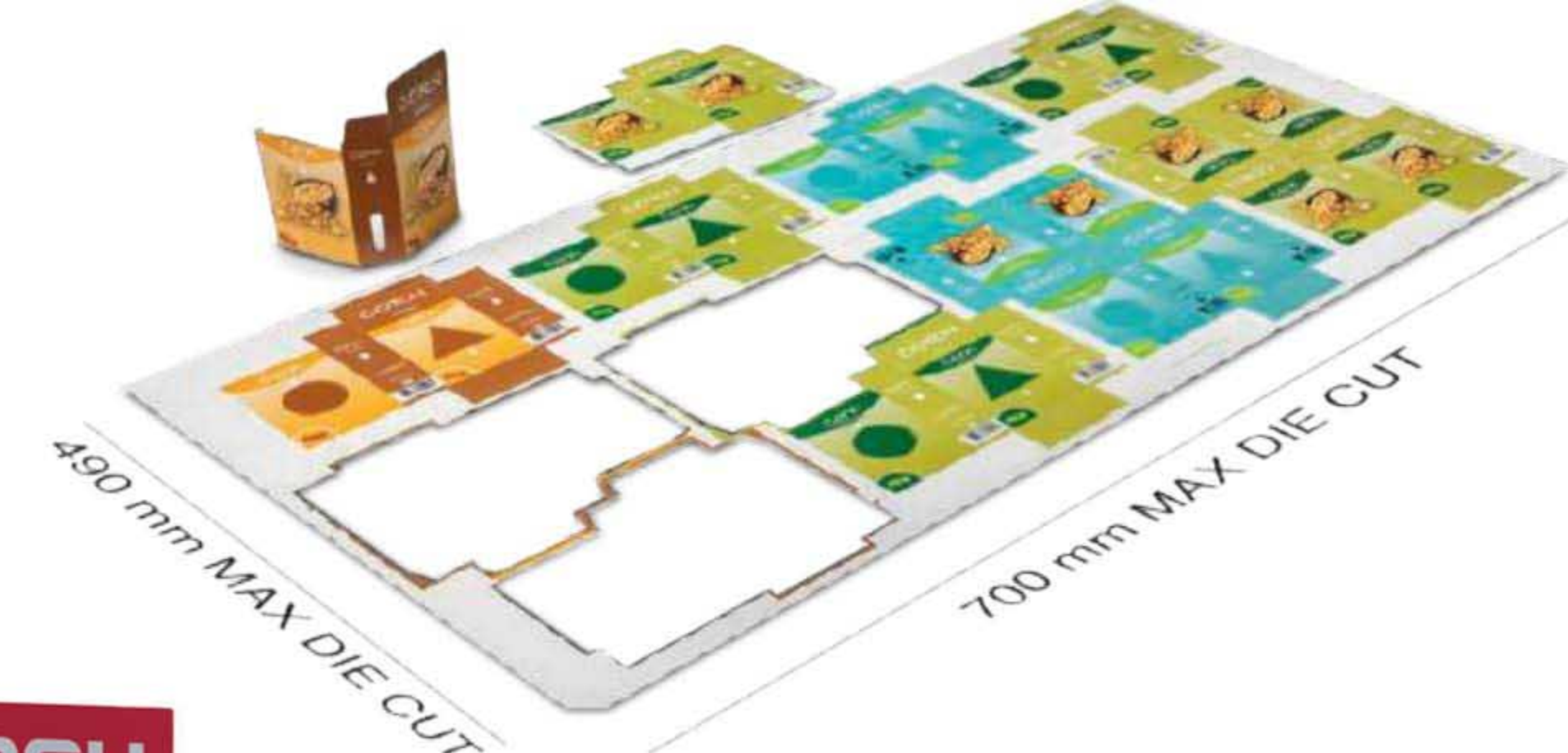
**paper, card, cardboard and a variety of plastics.**

**The DCH200 is particularly suited for die cutting, scoring and kiss-cutting with the ability to fine adjust the lower cutting point, and can be used for embossing and "Braille" printing.**

• DIE CUTTING UNIT



• WASTE EJECTION  
• OPENING DEVICE  
• EXIT BELT



**ADVANTAGES**

- Robust and compact automatic die-cutter.
- Minimal machine set-up times.
- Fast format change - completely motorised and managed through the intuitive touch-screen HMI.
- Fast and simple die-change system allows easy access for size change.
- The integrated waste removal system allows the finished products to be collected at the exit ready for packing, without any further work required.
- Ideal for operation in a traditional line or digital printing systems. The integrated communication system can be used to load operating programs remotely.
- Diagnostics and checks can be carried out remotely for check-ups and updates.

